

OPTICAL COMPONENTS

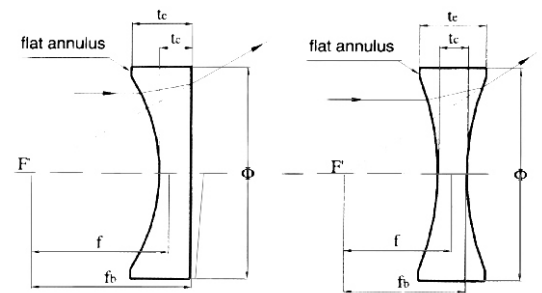
石英平凸和雙凸透鏡 FUSED SILICA PLANO - CONVEX & DOUBLE - CONVEX LENSES

石英平凸透鏡

Part Number	Φ(mm)	f(mm)	R ₁ (mm)	t _e (mm)	t _o (mm)	f _b (mm)
PVL1201-F	12.7	-20.0	9.20	4.5	2.0	16.9
PVL1202-F	12.7	-25.0	11.50	3.9	2.0	22.3
PVL1203-F	12.7	-30.0	13.80	3.5	2.0	27.5
PVL1204-F	12.7	-40.0	18.4	3.1	2.0	37.5
PVL2501-F	25.4	-50.0	23.0	5.8	2.0	46.0
PVL2502-F	25.4	-75.0	34.51	4.4	2.0	72.0
PVL2503-F	25.4	-100.0	46.01	3.8	2.0	97.4
PVL2504-F	25.4	-150.0	69.01	3.2	2.0	147.8
PVL2505-F	25.4	-200.0	92.02	2.9	2.0	198.0
PVL2506-F	25.4	-500.0	230.04	2.4	2.0	498.4
PVL3801-F	38.0	-100.0	46.01	7.1	3.0	95.1
PVL3802-F	38.0	-200.0	92.02	5.0	3.0	196.6
PVL3803-F	38.0	-350.0	161.03	4.1	3.0	347.2
PVL3804-F	38.0	-500.0	230.04	3.8	3.0	497.4

規格：

材料：紫外等級石英UV Fused silica
 平行軸焦點長度：+2%
 設計折射率：1.46008+0.00005@546.1nm
 光軸性：3 arc minutes
 直徑偏差：+0.0, -0.15毫米
 有效直徑：>80%
 表面平坦度： $\lambda/4@632.8\text{nm}$
 表面品質：60-40 scratch and dig
 倒角：0.25毫米× 45°



石英雙面凸透鏡

Part Number	Φ(mm)	f(mm)	R ₁ (mm)	t _e (mm)	t _o (mm)	f _b (mm)
DVL1201-F	12.7	-20.0	18.71	4.2	2.0	-20.0
DVL1202-F	12.7	-25.0	23.32	3.7	2.0	-25.7
DVL1203-F	12.7	-30.0	27.92	3.5	2.0	-30.7
DVL1204-F	12.7	-40.0	37.12	3.1	2.0	-40.7
DVL2501-F	25.4	-50.0	46.32	5.6	2.0	-50.7
DVL2502-F	25.4	-75.0	69.33	4.3	2.0	-75.7
DVL2503-F	25.4	-100.0	92.33	3.8	2.0	-100.7
DVL2504-F	25.4	-150.0	138.34	3.2	2.0	-150.7
DVL2505-F	25.4	-200.0	184.35	2.9	2.0	-200.7
DVL2506-F	25.4	-500.0	460.40	2.4	2.0	-500.7
DVL3801-F	38.0	-100.0	92.49	6.9	3.0	-101.0
DVL3802-F	38.0	-200.0	184.50	5.0	3.0	-201.0
DVL3803-F	38.0	-350.0	322.53	4.1	3.0	-351.0
DVL3804-F	38.0	-500.0	460.55	3.8	3.0	-501.0